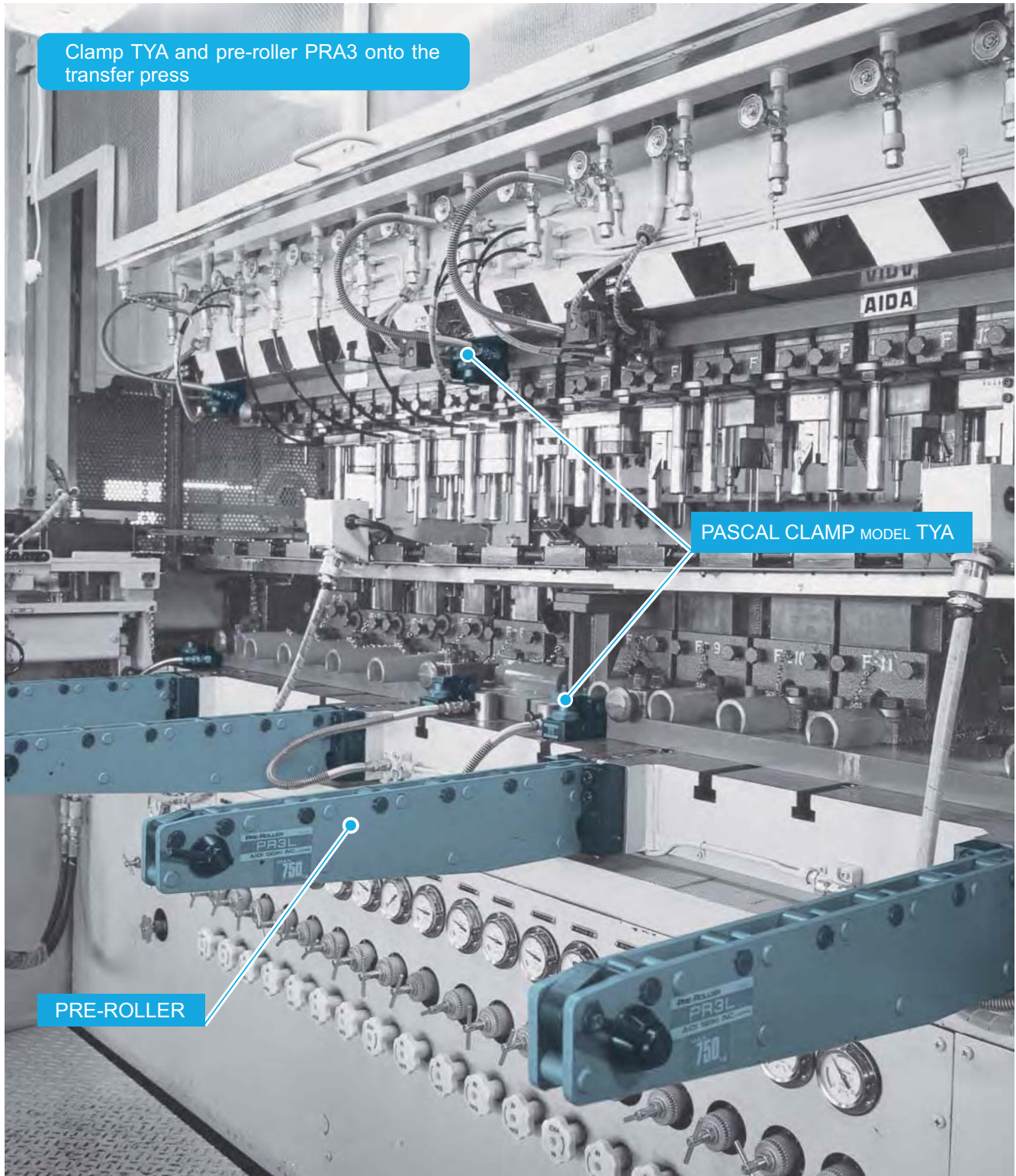
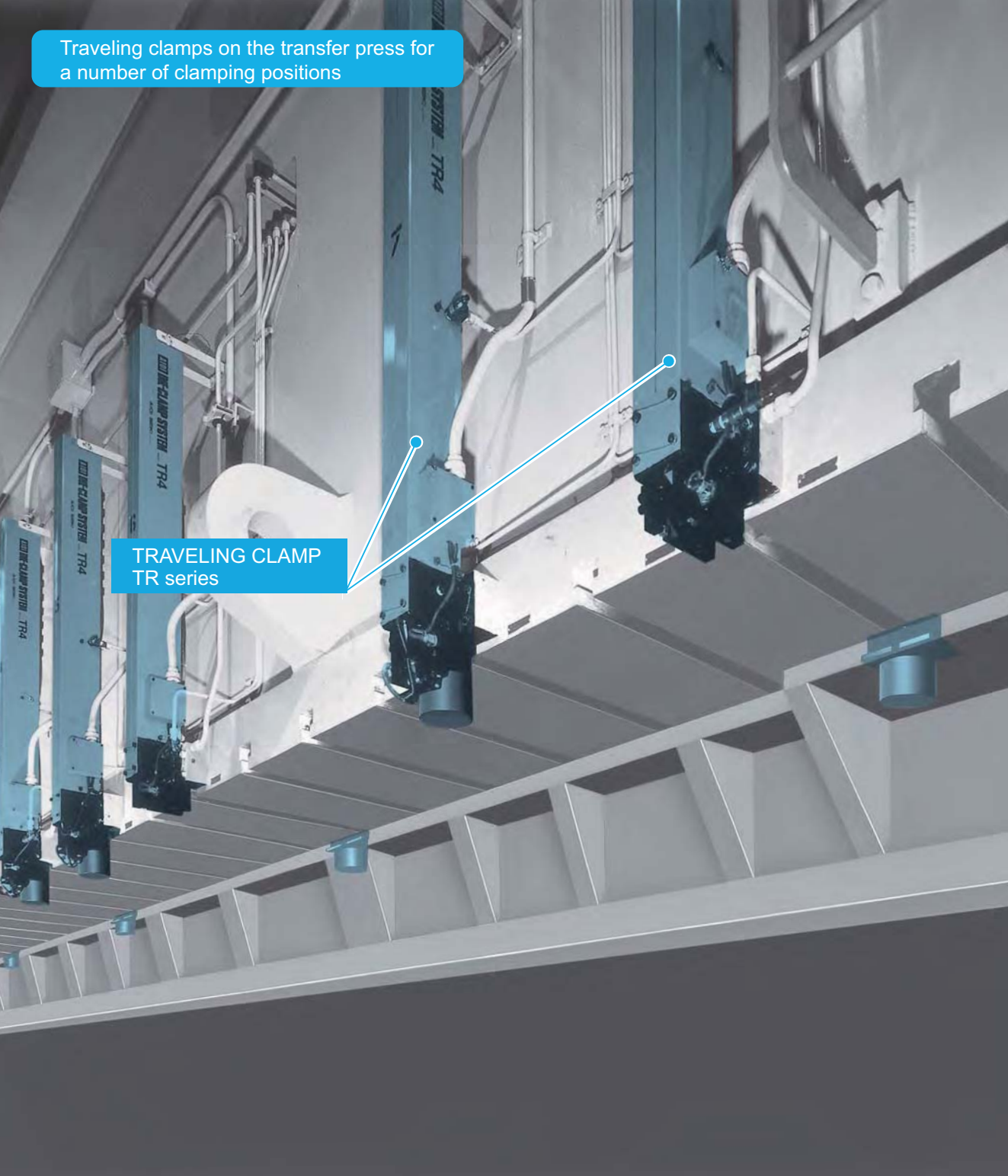


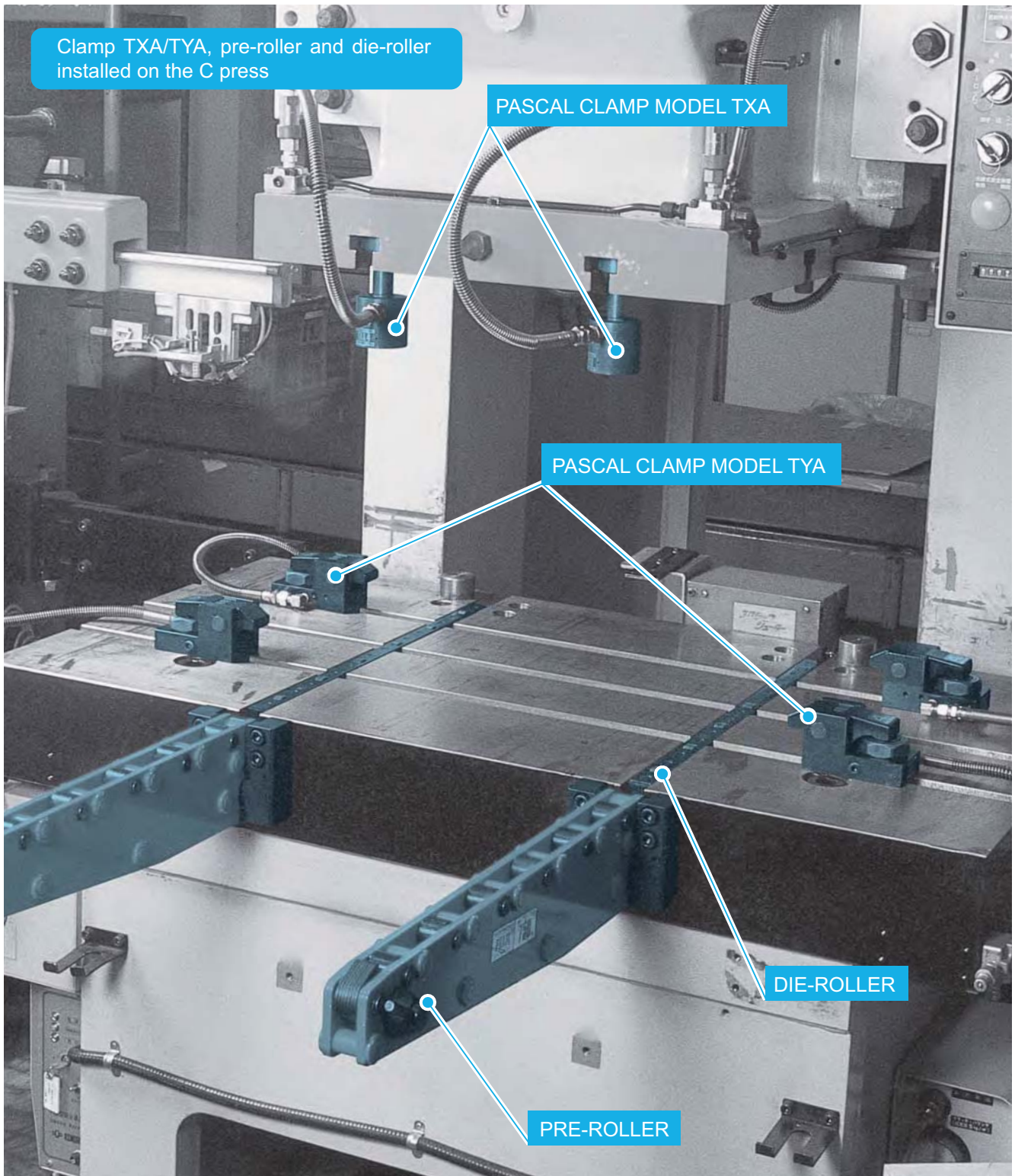
# PASCAL® QUICK DIE-CHANGE SYSTEM



The Quick Die Change System is the key to the just-in-time, stockless production in today's industries. **PASCAL** is the world leader in quick die change equipment - with a complete line of hardworking timesavers for every type of press from small OBI's to large transfer presses.



# PASCAL® QUICK DIE-CHANGE SYSTEM

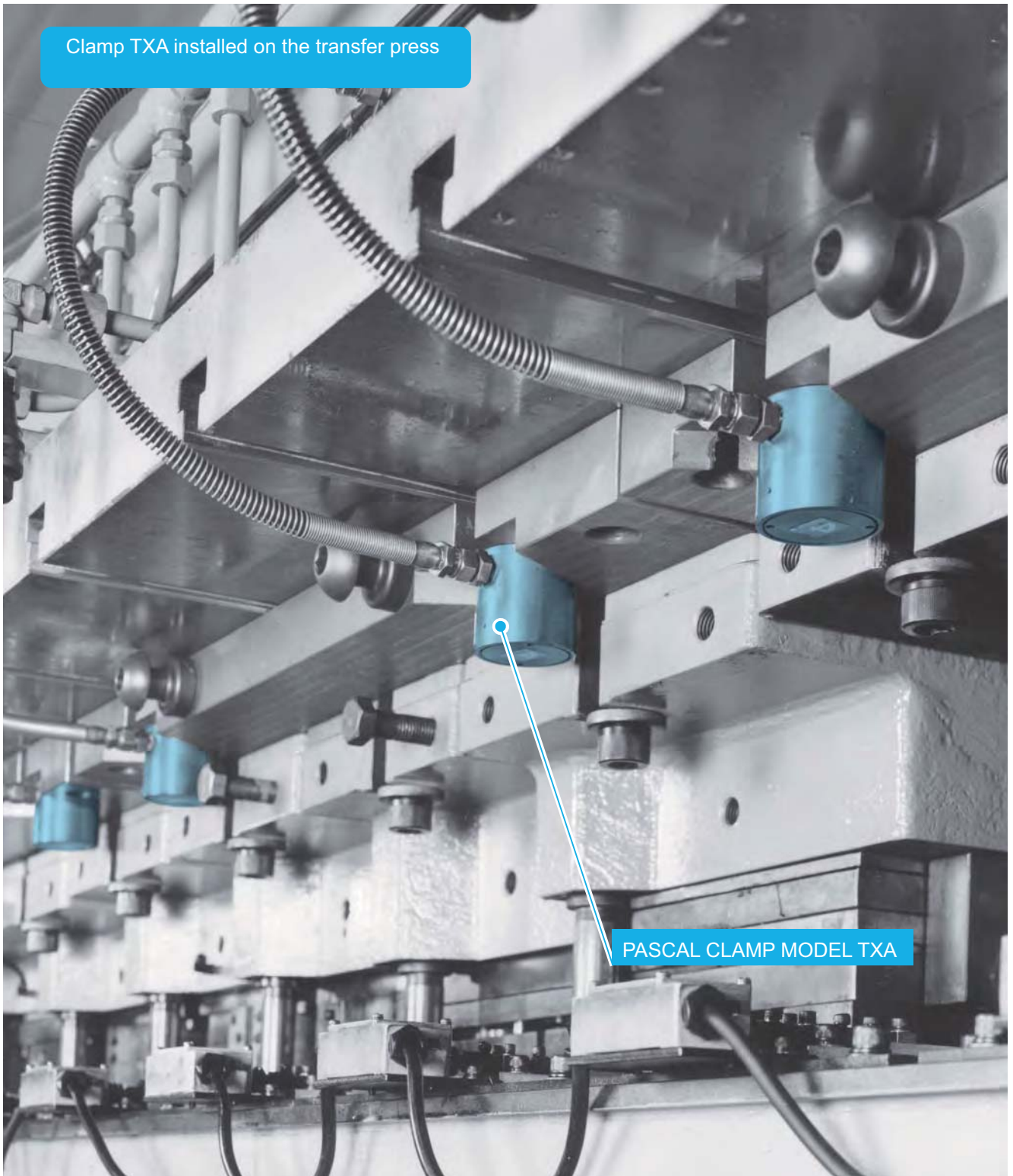


**PASCAL** hydraulic components are especially designed for quick die change.

**PASCAL** components provide safety, durability and reliability.

At **PASCAL**, every system incorporates safety and reliability. Our name insures you that you have selected the leader in the quick die change industry.

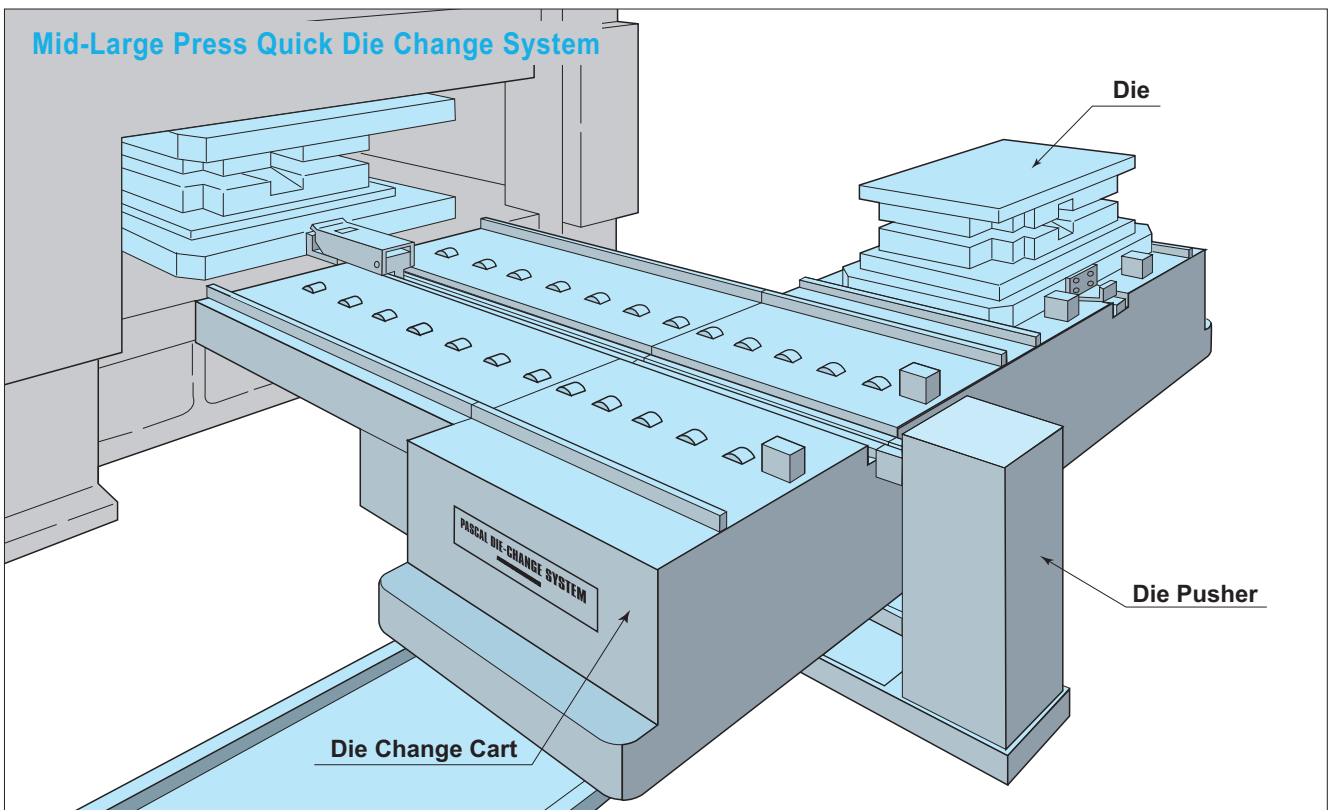
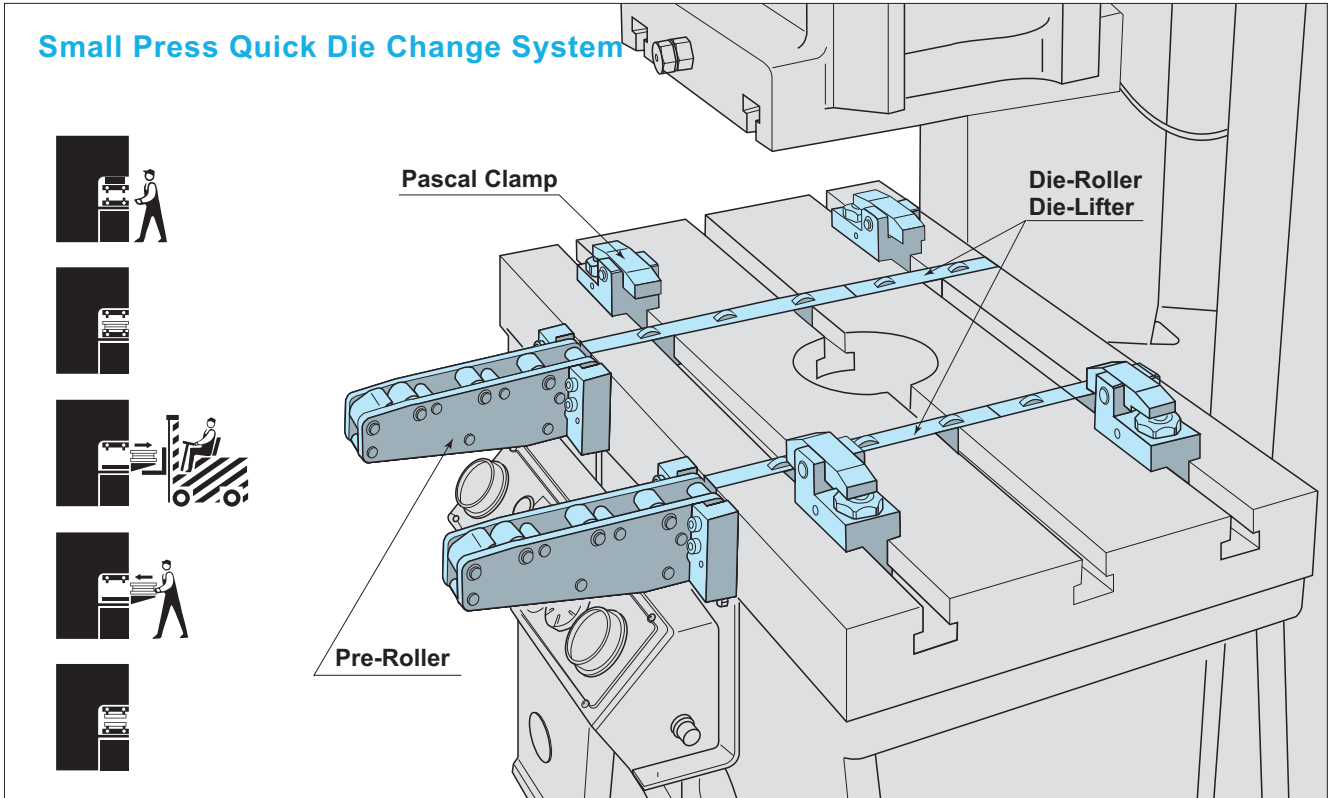
Clamp TXA installed on the transfer press



PASCAL CLAMP MODEL TXA

# PASCAL® QUICK DIE-CHANGE SYSTEM

Installed on over 30,000 presses, small to large  
Reliable **PASCAL** Quick Die Change Systems



## Specify the following items when ordering.

### PRESS SPECIFICATIONS

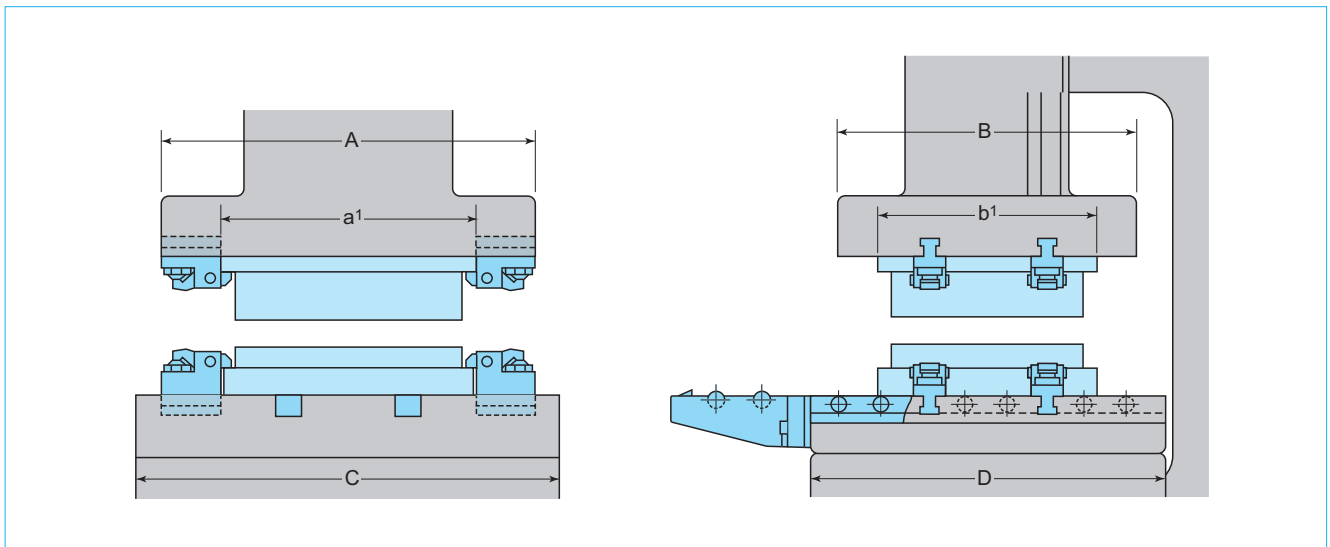
|                     |                                   |                              |
|---------------------|-----------------------------------|------------------------------|
| Installation for:   | <input type="checkbox"/> Existing | <input type="checkbox"/> New |
| Maker of Press:     |                                   |                              |
| Press Model:        |                                   |                              |
| Press Tonnage:      |                                   |                              |
| Press Slide Size:   | A <input type="text"/> mm         | x B <input type="text"/> mm  |
| Press Bolster Size: | C <input type="text"/> mm         | x D <input type="text"/> mm  |

### DIE SPECIFICATIONS

|               |  |
|---------------|--|
| L-R Dimension | a <sub>1</sub> MAX. <input type="text"/> MIN. <input type="text"/> |
| F-B Dimension | b <sub>1</sub> MAX. <input type="text"/> MIN. <input type="text"/> |
| Mass          | <input type="text"/> kg  |

### Special Specifications:

For elevated-temperature applications, specify ambient temperature, die temperature, and the fluid to be used in the hydraulic circuit (water-glycol, silicon, etc.).



### SELECTION COMPONENTS

# 1

#### SELECTION OF CLAMPS

Clamps should be selected from the TXA and TYA series (see p.11-16) in the majority of applications, to suit the shape of the die, press tonnage, and special stamping conditions. Total clamping force should be about 10-20% of press capacity. This is determined by the type of press, die, material, and operational stroke. Generally the die size will determine the number of clamps required, this is based on the die specification from the largest to the smallest die used in the machine.

# 2

#### SELECTIONS OF POWER CONTROL SYSTEMS

Calculate the total oil volume of all clamp cylinders and die lifters to determine the proper oil tank capacity, 1.5 or 5 liters are provided. The number of hydraulic circuits is determined by the quantity of valves required (see p. 9-10). Solenoid-operated VSB series valves are for automatic control; the VHA series is for hand operation. The HCF series provides combined pump and valve power units.

# 3

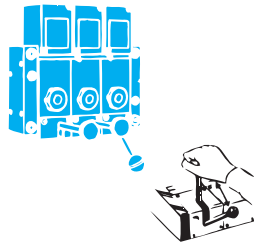
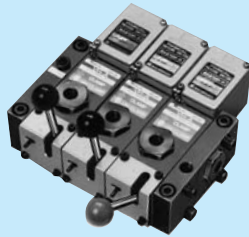
#### SELECTIONS OF ROLLERS

Hydraulic-lifting rollers DLF series are recommended for larger presses; Spring-lifting rollers DRA series are suitable for smaller presses. PR series pre-rollers help loading the die onto the press with an overhead crane or forklift. The pre-roller can be shorter than the die. Also, consider the die weight when selecting rollers.

PASCAL NON-LEAK VALVE (Manual Operated)

MODEL

**VHA**



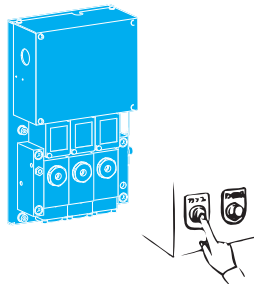
Non-leak sealing mechanism positively prevents any oil leakage, even after days and weeks of continuous use for maximum safety. A pressure switch is mounted on every valve to shut down press operation in case of an accidental pressure loss. This ensures double protection. Mechanical interlocks with VHA-A for clamps and VHA-B for die lifters to prevent accidental simultaneous die clamping and die lifting operation.

(Page 17)

PASCAL NON-LEAK VALVE (Solenoid Operated)

MODEL

**VSB**



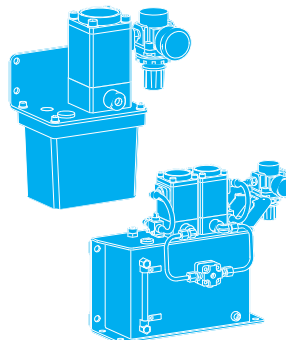
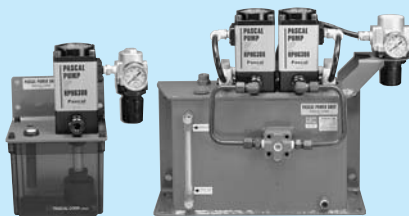
VSB valves function like VHA series, but are electrically controlled. This valve is extremely useful for push-button operation or for safety-interlock systems.

(Page 19)

PASCAL POWER UNIT

MODEL

**HUB  
HUC**



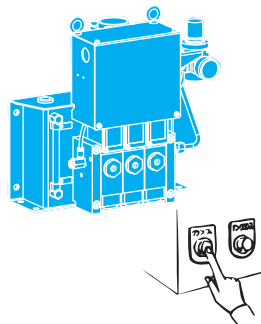
PASCAL power unit can convert compressed air force into high-pressure hydraulic power. It automatically pumps up oil and always maintains the same pressure, if pressure is decreased. Because of the air over oil system, energy consumption is minimized.

(Page 21)

PASCAL CONTROL UNIT

MODEL

**HCS**



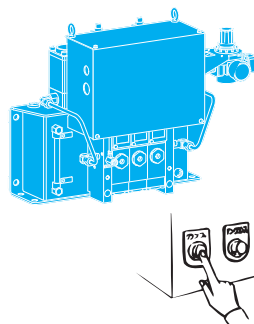
Pascal control unit model HCS is a new control unit for clamp system. It consists of Pascal pump and air solenoid operated non-leak valve with oil tank integrated in compact panel, which takes up minimum space on the machine. It is an ideal power pack unit for clamping system onto a small size of press machine.

(Page 23)

PASCAL CONTROL UNIT

MODEL

**HCP**



Pascal control unit model HCP is an ideal power source for the clamping system onto the mid or large size of press machine, which is composed of Pascal pump and non-leak valve unit with big oil tank. Single or twin pump type of HCP is available depending on the cylinder oil volume, which enables the reduction of clamp actuation time.

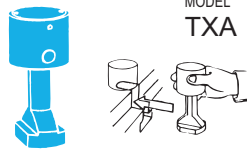
(Page 25)

# PASCAL® QUICK DIE-CHANGE SYSTEM

## PASCAL CLAMP

MODEL

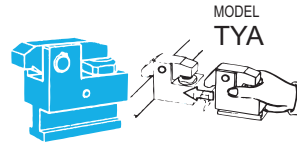
**TXA**  
**TYA**



MODEL  
**TXA**

This simple design provides a long clamping stroke and a rugged, low-cost clamp which fits perfectly on dies with U-cuts on the die shoe. The wide range of clamping force from 9.8 kN to 245 kN accommodates both small and large presses.

(Page 11)



MODEL  
**TYA**

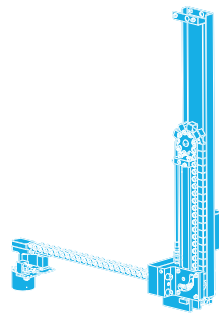
The rugged lever-clamp design provides up to 245 kN of clamping force for dies with or without U-cuts on the die shoe. The straight lever is horizontal at unclamp to secure the die even in case of accidental pressure loss in the hydraulic circuit.

(Page 15)

## TR SERIES TRAVELING CLAMPS

MODEL

**TRA**



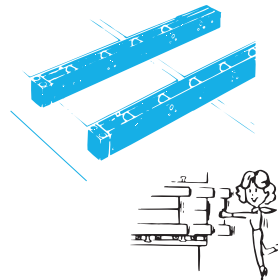
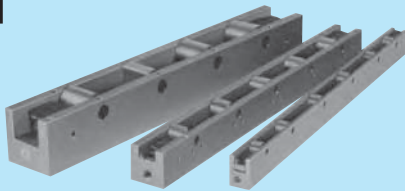
TRA series is used effectively on large presses, which can carry the clamp along the T-slot on the press for a long running stroke. It eliminates the expensive common plates used with swing-rod clamps, saving money, floor space, crane work, and improving total production efficiency.

(Page 13)

## HYDRAULIC-LIFTING DIE-ROLLERS

MODEL

**DLF**



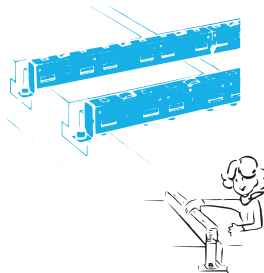
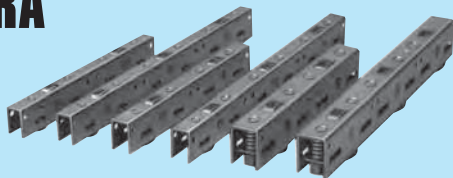
With DLF series, heavy dies are lifted by powerful hydraulic cylinders, and can be smoothly moved with a slight force. The special roller bearings withstand heavy dies and loading shocks. Three widths of the standard 100-mm increment lengths can accommodate a wide range of die weights and sizes. Built-in scrapers wipe dust and chips out of the rollers.

(Page 27)

## SPRING-LIFTING DIE-ROLLERS

MODEL

**DRA**



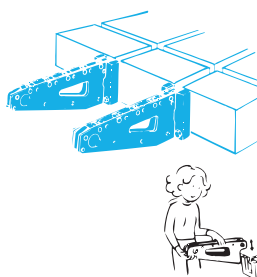
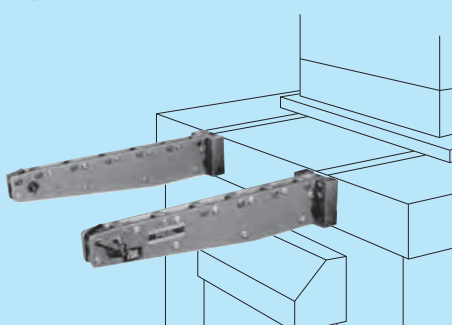
Simple, economical spring-lifting rollers are suitable for small to mid-sized dies. These narrow die-rollers fit most of the existing T-slot. The spring loaded design does not require a power source.

(Page 29)

## PRE-ROLLERS

MODEL

**PR**



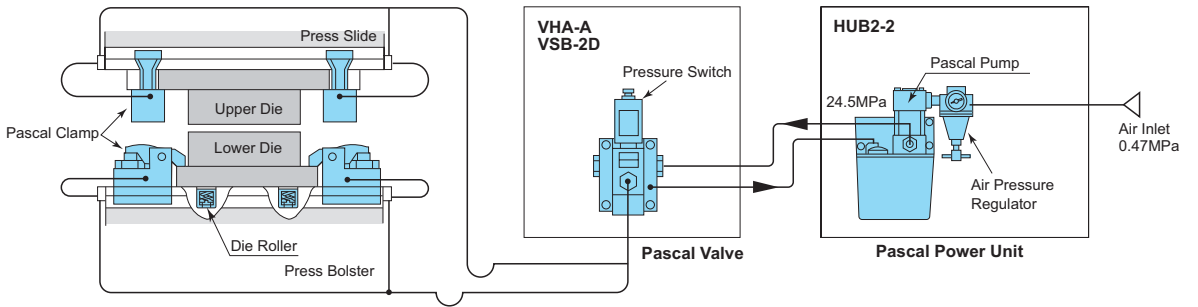
Pre-roller will help shifting dies to the comfortable position where crane or forklift can access and transfer them away.

Total 7 standard models are available for the vast needs of applications.

(Page 31)

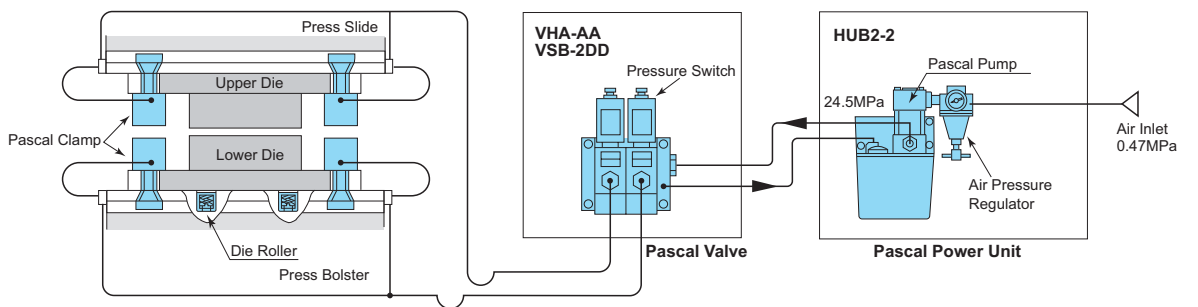
**SYSTEM  
A**

Upper Die:  
Lower Die:  
1 Circuit



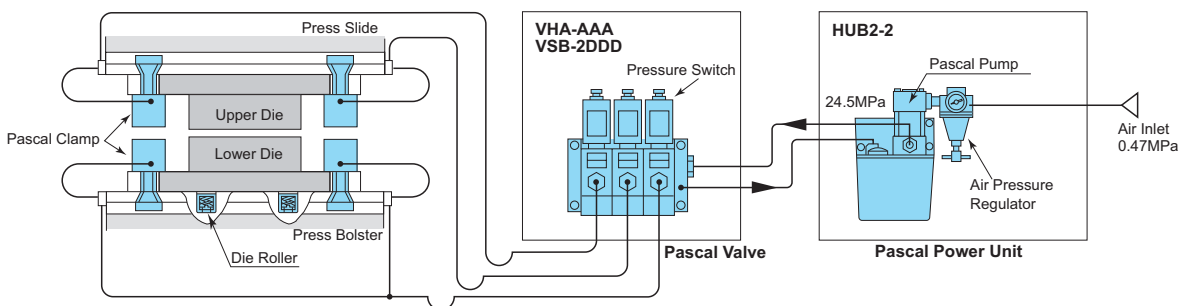
**SYSTEM  
AA**

Upper Die:  
1 Circuit  
Lower Die:  
1 Circuit

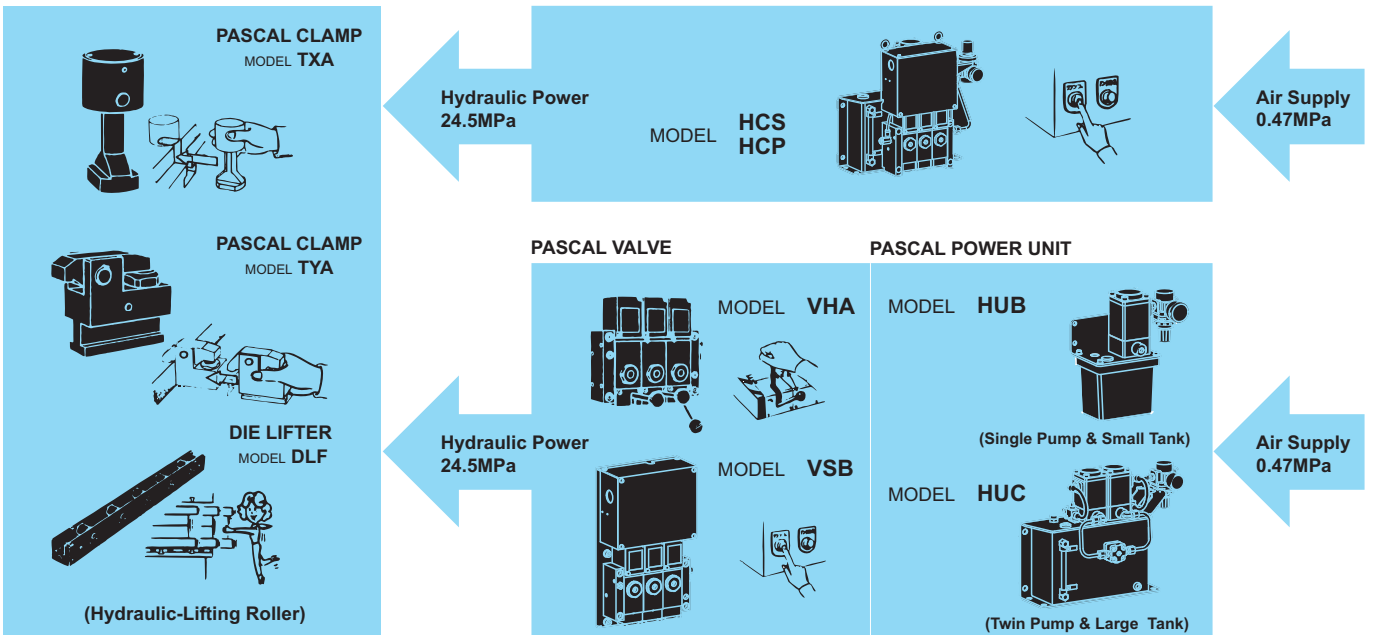


**SYSTEM  
AAA**

Upper Die:  
2 Circuits  
Lower Die:  
1 Circuit



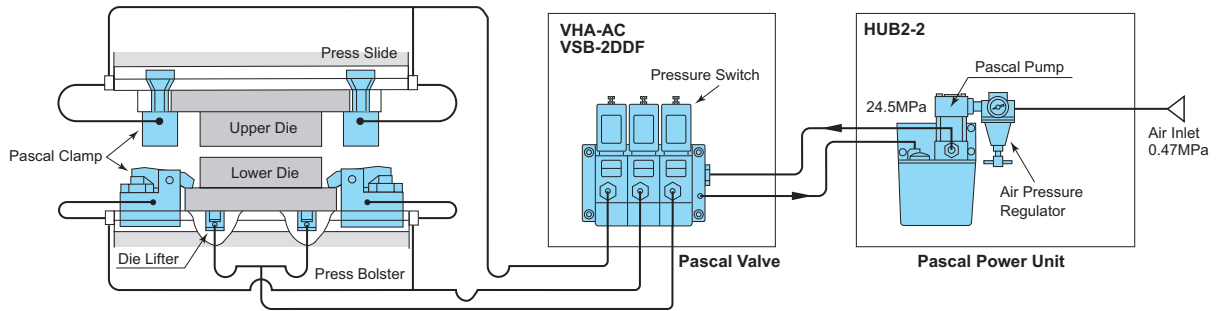
**PASCAL CONTROL UNIT**



# PASCAL® QUICK DIE-CHANGE SYSTEM

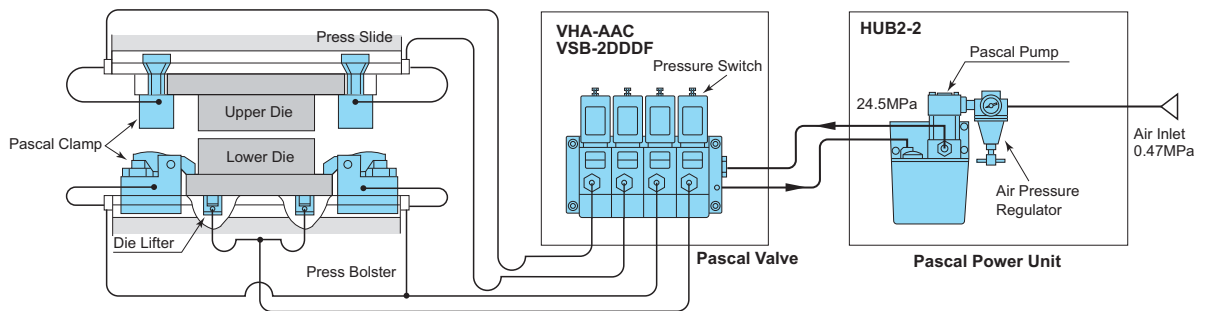
## SYSTEM AC

Upper Die:  
1 Circuit  
Lower Die:  
1 Circuit  
Die Lifter:  
1 Circuit



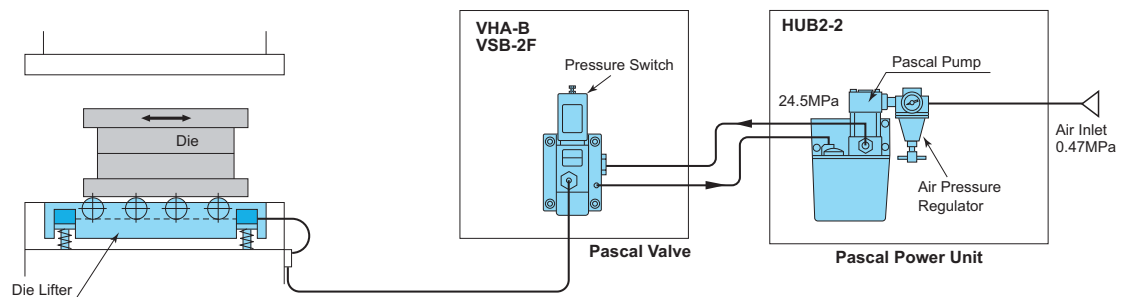
## SYSTEM AAC

Upper Die:  
2 Circuits  
Lower Die:  
1 Circuit  
Die Lifter:  
1 Circuit


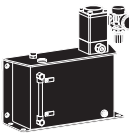
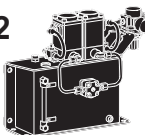


## SYSTEM B

Die Lifter:  
1 Circuit



□: Operating Voltage

| SYSTEM | Pascal Non-leak Valve |              | Pascal Power Unit  | Pascal Control Unit      |
|--------|-----------------------|--------------|--|--------------------------|
|        | Solenoid Valve        | Manual Valve |  |                          |
| A      | VSB□-2D               | VHA-A        | HUB2-2  | HCS□-2D<br>HCP□-2D       |
| AA     | VSB□-2DD              | VHA-AA       |  | HCS□-2DD<br>HCP□-2DD     |
| AAA    | VSB□-2DDD             | VHA-AAA      | HUC-2   | HCS□-2DDD<br>HCP□-2DDD   |
| AC     | VSB□-2DDF             | VHA-AC       |  | HCS□-2DDF<br>HCP□-2DDF   |
| AAC    | VSB□-2DDDF            | VHA-AAC      | HUC-22  | HCS□-2DDDF<br>HCP□-2DDDF |
| B      | VSB□-2F               | VHA-B        |  | HCS□-2F<br>HCP□-2F       |