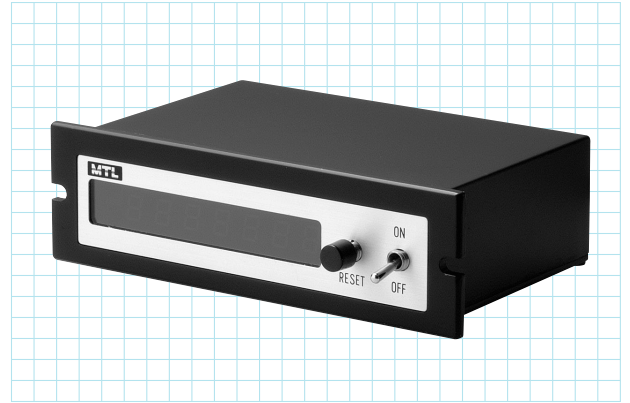
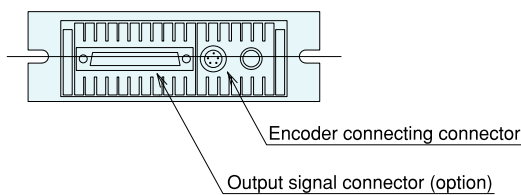
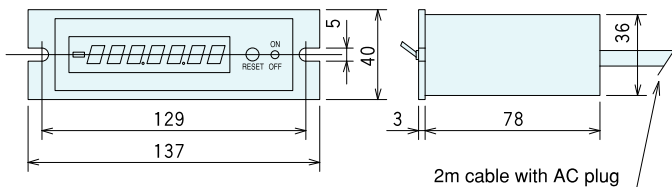


DC series

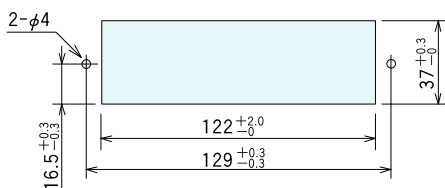
[Measuring Angle/Measuring Length]



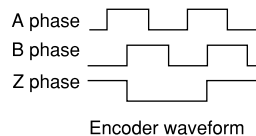
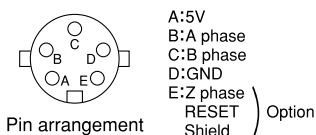
Outside dimensions



Mounting hole processing dimensions



Input signal connector (Tajimi Electronics: R05-R5M) cord side: R05-PB5F

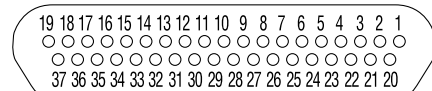


Counter specifications

Type	DC-7(angle)	DC-6(decimal)
Indicating function	With (-) indication, reversible	
Indicating range	-359.59.59~0 ~359.59.59	-9999.999~0 ~9999.999
Indicating unit	15sec. 30sec. 1min	0.001 0.01 0.1 1
Indicator	Red LED	
Input signal	90° phase difference square wave 2 signals (H level 4.0 to 5.0V, L level 0 to 0.5V)	
Maximum response frequency	max. 250kHz	
Dividing/multiplying	1/4-2-4 (to be specified)	
Power supply	AC 100±10%, 50/60Hz, 175mA or less	
Power cord	2m with plug	
Mass	500g	
Working temperature	0°C~60°C	
Applicable detector	Rotary encoder	
Power supply for detector	DC5V 55mA or less	

Option

●BCD parallel output (output IC 74HC573)



Terminal No.	Signal name	Terminal No.	Signal name	Terminal No.	Signal name
1	2 ⁰ (A) ×10 ⁰	14	2 ² (C) ×10 ⁶	27	2 ³ (D) ×10 ³
2	2 ² (C) ×10 ⁰	15	NC	28	2 ¹ (B) ×10 ⁴
3	2 ⁰ (A) ×10 ¹	16	NC	29	2 ³ (D) ×10 ⁴
4	2 ² (C) ×10 ¹	17	External latch input	30	2 ¹ (B) ×10 ⁵
5	2 ⁰ (A) ×10 ²	18	External reset input	31	2 ³ (D) ×10 ⁵
6	2 ² (C) ×10 ²	19	GND	32	2 ¹ (B) ×10 ⁶
7	2 ⁰ (A) ×10 ³	20	2 ¹ (B) ×10 ⁰	33	2 ³ (D) ×10 ⁶
8	2 ² (C) ×10 ³	21	2 ³ (D) ×10 ⁰	34	NC
9	2 ⁰ (A) ×10 ⁴	22	2 ¹ (B) ×10 ¹	35	Take-in prohibiting signal
10	2 ² (C) ×10 ⁴	23	2 ³ (D) ×10 ¹	36	SIGN
11	2 ⁰ (A) ×10 ⁵	24	2 ¹ (B) ×10 ²	37	GND
12	2 ² (C) ×10 ⁵	25	2 ³ (D) ×10 ²		
13	2 ⁰ (A) ×10 ⁶	26	2 ¹ (B) ×10 ³		

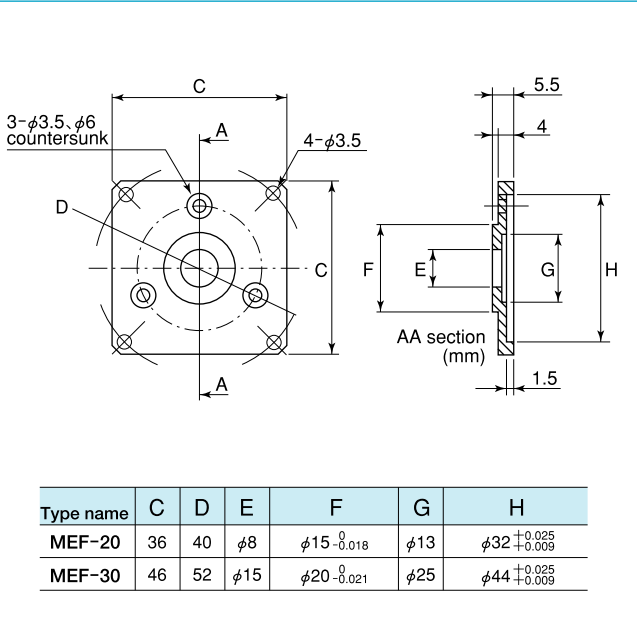
Output signal connector (Japan Aviation Electronics Industry: DC-37SAF-N)
Attached product (Japan Aviation Electronics Industry: DASP-JP37P)

●ST: Built-in multiplication circuit (Corresponding to option PS) ×2、×4、×8、×16

Fitting Method for Shaft Type Encoder (MES/MAS)

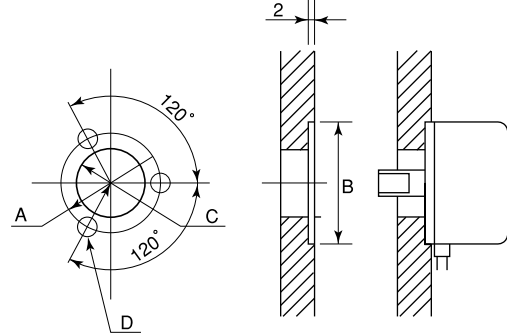
(Use this method when the base of the main unit of MES-20 or MES-30 with a single-shaft cannot be installed from the shaft side.)

Flange MEF-20 (for MES-20), MEF-30 (for MES-30)



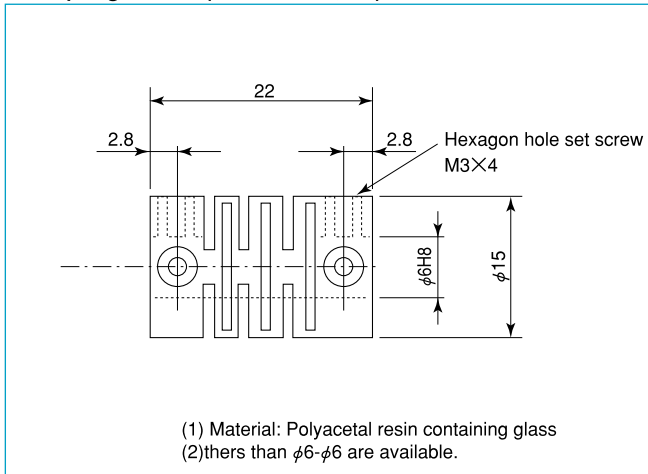
Fitting dimensions

MES single-shaft type



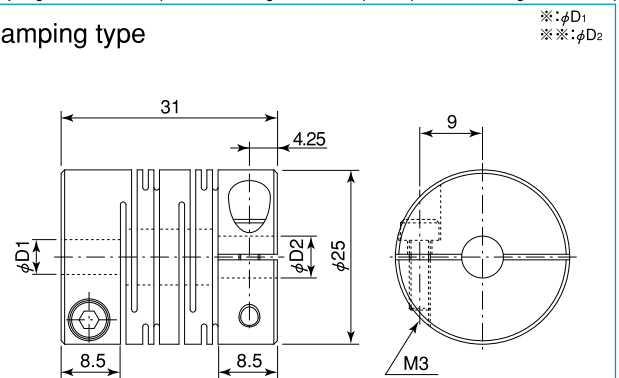
Type name	A	B	C	D
MES-20	φ24	φ32 ^{+0.025} / _{-0.009}	φ16	3-φ3.5
MES-30	φ36	φ44 ^{+0.025} / _{-0.009}	φ28	3-φ3.5
MES-40	φ45	φ56 ^{+0.025} / _{-0.009}	φ30 ^{+0.025} / ₀	3-φ3.5
MES-50	φ56	φ65 ^{+0.025} / _{-0.009}	φ32	3-φ4.5

Coupling GJ6x6 (for MES-20, 30)

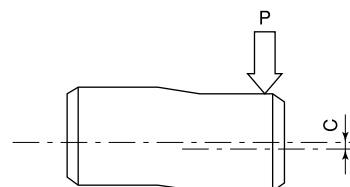
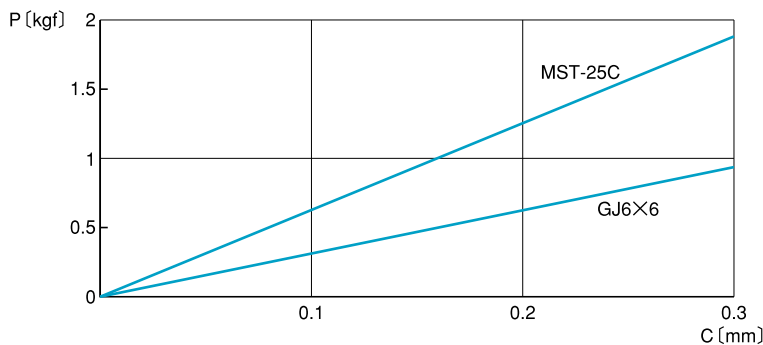


Coupling MST-25C-6x6 (for MES-30 high resolution), 8x8 (for MES-50 high resolution)

Clamping type



Eccentric spring characteristics



It should be used under optimum conditions to maintain the accuracy of the encoder and also for prolonged use.