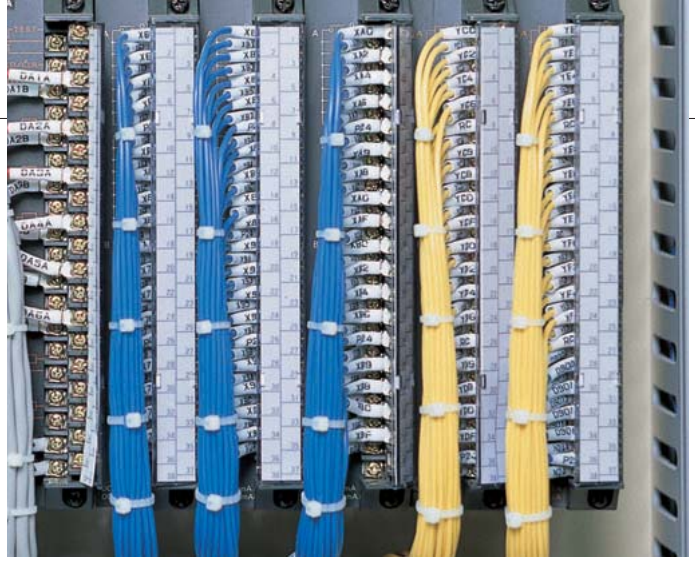
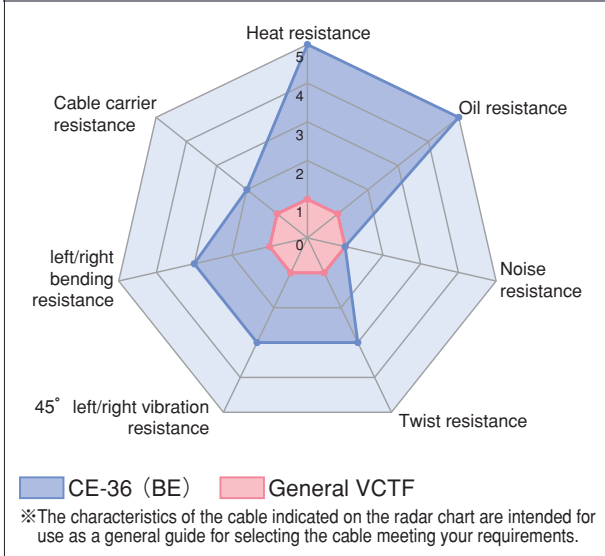


CE-36(BE)

UL AWM 2464



Characteristics Radar Chart



Features

- Global-standard cables designed to CE&UL • cUL&GOST-R
- Oil resistance/Heat resistance (105°C)/Flexibility

Application

- Internal/external cable connection to electrical equipment
- Cable connection under oil environment

Certification/Marking



Technical Data

	CE	UL • cUL
Voltage Rating	300/300V	300V
Temperature Rating	70°C	80°C
Test Voltage	AC2000V • 15min	AC3000V • 1min
Flame Resistance	VDE0482 Teil 265-2-1	VW-1, FT1
Applicable Standard	VDE0281-13	UL 758 AWM Style 2464 CAN/CSA-C22.2 No210.2

Electrical Characteristics

Item	Nominal Cross-Sectional Area (mm ²) (AWG)	Number of Cores	Allowable Current (A)														
			2	3	4	5	7	8	9	11	13	17	21	25	31	41	51
Conductor Resistance (20°C) Ω/km or below	0.5 (20)	34.3	11	11	10	9	8	7	7	6	6	5	5	5	4	4	4
	0.75 (18)	22.2	14	14	13	11	10	10	9	8	8	7	7	6	6	5	5
	1 (18)	19.5	15	15	14	12	11	10	10	9	8	8	7	7	6	6	5
	1.5 (16)	13.3	19	19	17	15	14	13	12	11	11	10	9	8	8	7	7
	2.5 (14)	7.98	27	27	23	21	19	18	17	16	15	14	13	12	11	10	9
Insulation Resistance (20°C) MΩ km or above	0.5(20)~2.5(14)	10															

- The cable designed with its number of cores of 3 or more as indicated in the above table contains one core of 2.5mm² (14AWG) (50/0.25) green/yellow grounding conductor.
- The conductor resistance of the 2.5mm² (14AWG) green/yellow grounding conductor is 7.98 Ω/km or less at 20°C.
- The insulation resistance of the 2.5mm² (14AWG) green/yellow grounding conductor is 10 MΩkm or more at 20°C.

- Allowable Current (A) for the cable is based on calculation under aerial one-cable installation at ambient temperature of 30°C, not representing a guaranteed value.
Allowable current for the cable at ambient temperature above 30°C is to be determined by multiplying the current value by the appropriate current reduction factor specified in the following table for the ambient temperature.
- The Allowable current values are those calculated by JCS197, but not guaranteed.
(For details on Allowable current of the cable when used in Europe, refer to the applicable standard — IEC60364-5 (Electrical installation of building — Part 5: Selection and erection of electrical equipment — Section 523: Current-carrying capacities in wiring system).
JCS197... Japanese Electric Wire and Cable Makers' Association's Standard "Allowable Current for Cable Cable")

Current Reduction Factor Table

Ambient Temperature (°C)	30	35	40	45	50	55	60	65
Current Reduction Factor	1.00	0.94	0.87	0.79	0.71	0.61	0.5	0.35

Core Identification

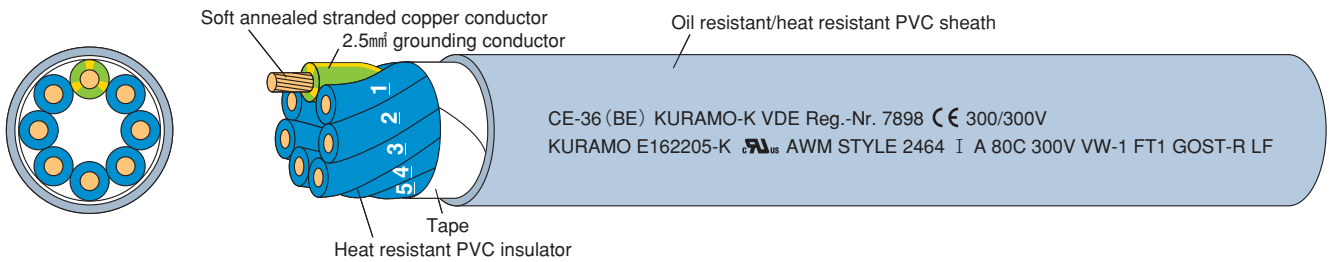
Core identification system	
Identification by Number	2cores – Identified by numbering in white color on blue insulator surface 3cores or more – Identified by numbering in white color on blue insulator surface + green/yellow

● Green/yellow: Yellow straight lines on green (in green/yellow color ratio of 60/40)

Cable Construction

Item	Configuration
Conductor	Soft annealed stranded copper
Insulator	Heat resistant PVC
Conductor stranding	Circular
Core wrapping tape	Tape wrap around cores if their number is 4 or more
Sheath	Oil resistant/heat resistant PVC (light gray)

■ Example: 8 core (7 core (2.5mm²) 14AWG + 1 core (2.5mm²) 14AWG) cable



Cable Outside Diameter/Weight

Nominal cross-sectional area (mm ²) <AWG> Conductor count/wire diameter	Number of Cores														
	2	3	4	5	7	8	9	11	13	17	21	25	31	41	51
0.5 (22/0.18) <20>	※ 5.6 45	7.1 80	7.3 90	※ 7.7 100	8.9 115	※ 8.3 130	10.0 150	10.5 150	※ 11.0 175	11.5 210	13.0 250	13.0 270	15.0 340	17.0 430	※ 18.0 520
0.75 (35/0.18) <18>	※ 6.0 55	7.3 86	7.7 100	※ 8.2 115	9.4 140	※ 10.5 160	11.0 170	11.5 195	※ 11.5 215	12.5 270	14.5 330	15.5 375	16.5 450	18.5 580	21.0 740
1 (40/0.18) <18>	※ 6.3 60	7.4 90	7.9 105	※ 8.4 120	9.6 150	※ 10.5 165	11.0 180	12.0 210	※ 12.0 235	13.5 290	15.0 360	16.0 415	17.0 495	19.5 640	※ 21.5 800
1.5 (60/0.18) <16>	※ 7.1 75	7.9 105	8.5 125	※ 9.3 145	11.0 185	※ 12.0 210	12.5 235	12.5 265	※ 13.5 310	15.5 400	17.0 485	18.0 560	19.5 690	23.0 920	※ 25.0 1110
2.5 (50/0.25) <14>	※ 8.7 120	9.0 140	9.9 165	※ 11.0 200	13.0 270	※ 14.5 310	15.5 345	16.0 410	※ 16.5 475	19.0 610	22.0 770	23.0 890	25.0 1090	29.0 1460	※ 31.5 1770

● The cable designed with its number of cores of 3 or more as indicated in the above table contains one core of 2.5mm² (14AWG) (50/0.25) green/yellow grounding conductor.

Upper: Standard cable outside diameter (Approx.mm)

Lower: Approximate weight (kg/km)

※ indicates specifications for custom order production.